

THE J.D. MULCAHY PAVILION

2025 Bell Show

Celebrating 67 years



Saturday 1st March

Sunday 2nd March

Pavilion Schedule

Gate Entry (Sat) - \$15

Gate Entry (Sun) – free
Membership \$20

15 Years & Under – Free

President: Chris Edwards 0428 631 137

bellshowsociety@gmail.com

Secretary: Amanda Burns 0499 421 156

bellshowandrodeo.com.au

Treasurer: Sarah Heathwood 0407 110 593

facebook.com/BellShowSociety

PO Box 38, BELL Qld 4408

THE J.D. MULCAHY PAVILION

WHO IS J.D. MULCAHY?

John Mulcahy moved out of dairying in the early fifties just like other land holders in the Yamsion district. Without a dairy and cheese factory and the workers it employed, Yamsion was no longer a focus for the community and the interest and involvement in the local sports days and campdrafts died out. In contrast the little township of Bell was rattling along. At a meeting to discuss the future of Yamsion, it was decided to move the sports days and campdrafts to Bell.

As he had helped build the Yamsion hall and grounds in the forties, John now turned his hand to helping with the Bell Showgrounds. The plans included a show ring and pavilions, a racetrack, and a rodeo and campdraft area.

So once again John set up his mountains with his axe over his shoulder and Jim Myers in tow to cut the timber for the yards and buildings. While they were felling trees for the showgrounds, Jim Myers says he saw John miss death by an inch.

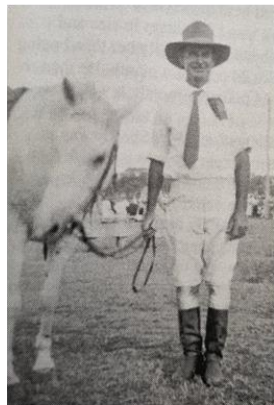
"We were felling this tree – a big ironbark up a hill," says Jim. "He was standing at the stump

and I was down hill. He was yelling at me to go because the tree was about to come down. So I went and as I looked back I saw the tree slip back on the stump. John was holding his saw up in the air as if to ward off the tree. As it came down it hit his saw and broke it clean in half."

They took the timber into the Dalby sawmill where it was sawn into posts and rails to be used in the show ring and pavilion. It was a big job and forty years down the track the buildings and yards are still serving the purpose for which they were built in the fifties.

In recognition of his work on the grounds and his contribution to the community in general, when the Bell showground pavilion was officially opened in 1958 it was named in John's honour – the J.D. Mulcahy Pavilion.

(Taken from the John Mulcahy Story: Four Score and More, page 55)



John Douglas Mulcahy was the long-time ringmaster at the Bell Show.

The first Bell Show was held in 1959 with GL Gordon, President, JW O'Keefe, Secretary, and JA Sorley, Treasurer, heading a strong band of volunteers.

Life membership was awarded to John Mulcahy, the Ringmaster, for his generosity and great support with building of the essential infrastructure for Bell and District's first Show.

To all who have advanced this event since the initial first show, we owe a great debt, for their foresight, courage, support and perseverance through the generations since then.

To all who continue their commitment to the ongoing development of our home show. We thank you.

INDEX

JD Mulcahy Pavilion Rules	4
Section JA Pot Plants	5
Section J Horticulture	7
Section KA Fine Art	12
Section K Photography	13
Section L Cookery	15
Section M Needlework	20
Section N Handicrafts	25
Colouring Competition	28
Section P Schoolwork	30
Section H Farm Produce	31
Bell History Group Display	35

The Bell Show Society Inc. thanks all SPONSORS who make our show the success it is.

We are extremely grateful for your financial contributions and donation of prizes.

Keen to learn more about the Pavilion?

We are on the lookout for more helpers. If you have an interest in any section, please talk to our Stewards to see how you can help out.

JD MULCAHY PAVILION PRIZE

**“JD Mulcahy Pavilion Prize” will be awarded to best exhibit in the Pavilion.
This will be chosen by the person who officially opens the Show.**

Voucher donated by Pips ‘n’ Cherries

JD MULCAHY PAVILION RULES

1. Chief Stewards rely on the integrity of the exhibitors when entries are received.
2. All entries must be accompanied by an entry form, an entrance fee where specified in this schedule, or they will not be accepted.
3. Late entries will not be accepted.
4. Competitions are run under the General and Special Regulations of the Queensland Chamber of Agricultural Societies Inc. Please visit their website for full rules and regulations for further advice.
5. Chief Stewards reserve the right to re-class entries.
6. The Judge's decision will be final and no correspondence entered into.
7. If the Judge decides that none of the entries are worthy in a particular class, then no prize will be awarded.
8. Highly Commended Certificates may also be awarded at the discretion of the Judges and Stewards.
9. Every care will be taken of the exhibits, but the Bell Show Society shall not be responsible for any loss or damage from any cause whatsoever, and shall not be held liable for any such loss caused thereby.
10. Any changes or cancellations will be published on our Website and Facebook pages as soon as practicable.

Pavilion Hours

Saturday from 8.00am – 5.00pm

Sunday from 8.00am – 2.00pm

2025 Pavilion Theme – “Windmills”

Counting competition winner - Voucher donated by Mrs Bev Stirling

Section JA - POT PLANTS

Chief Steward: Mandy Cartwright – amanda.cartwright@bigpond.com
(Assistant Stewards: Margaret Sheppard, Amanda Nation)

ENTRY FEE: 50 cents – Juniors Free (with completed entry form)

PRIZE MONEY: 1ST - \$2, 2nd – \$1

Exhibits to be delivered to the pavilion by 9am Friday 28th February 2025

Judging commencing 10am

1. Entries must be clearly labelled before delivery showing the exhibitor's name and class entered.
2. Exhibits to be of a weight and size to be able to be handled conveniently by stewards and judges.
3. Plant and pot to be judged together only where specified.
4. Judges reserve the right to rule an exhibit ineligible if it is deemed that the exhibit does not appear to be the bonafide plant of the exhibitor (ie bought plants which are re-potted).
5. All plants will be lightly watered Saturday morning.
6. No plastic containers. Please provide a saucer for pots.
7. Pot Plants to be presented with the "Windmill" theme where possible.
8. Exhibits in this section may be collected after 2pm on Sunday 2nd March 2025.

POT PLANTS

JA1 Flowering Plant or Plants in Hanging Pot

JA2 Hanging Pot Plant

*Champion Hanging Pot (JA1 & JA2), **Dulcie Derrick Memorial Prize***

JA3 Hanging Fern

JA4 Nephrolepis (Fish) Fern

JA5 Fern, any other variety

*Champion Fern, (JA3 – JA5), Prize donated by **Bernice Seton and Ann Kennedy***

JA6 Foliage Plant

JA7 Variegated Foliage Plant

JA8 Climbing Plant, any variety

JA9 Geranium - Ivy

JA10 Geranium – Zonal (Common)

JA11 Begonia - Cane.

JA12 Begonia - Foliage.

*Champion Foliage Plant (JA6 - JA12), Prize donated by **Rod & Lyn Sperling***

JA13 Succulent Plant, any variety

JA14 Cactus Plant, any variety

JA15 Collection of Succulents and/or Cacti, in one container

*Champion Succulent and/or Cacti (JA13 - JA15), Prize donated by **Rebecca Pope***

- JA16 Bromeliad
 JA17 Bonsai, to be viewed from one side only
 JA18 Hall Table Plant (overall presentation)
 JA19 Plant in a Novelty Container (overall presentation) with Windmill Theme incorporated
 JA20 Flowering Plant or Plants in Pot
 JA21 Any Pot Plant not already mentioned
*Champion Pot Plant (JA16 - JA21), Prize donated by the **Irwin family** in memory of Bill and Barb Irwin.*

- JA22 Junior Exhibit (under 15 years) – Pot Plant, in a novelty container with Windmill Theme incorporated
 JA23 Junior Exhibit (under 15 years) – Cactus / Succulent
 JA24 Junior Exhibit (under 15 years) – Hanging Pot Plant
*Best Junior Exhibit, (JA22-JA24), \$15 donated by **Williams Family**.*
*Most Points in Pot Plant Section, Prize donated by **Williams Family***
*Grand Champion Pot Plant of Show, Mrs Armstrong Memorial Prize donated by the **Armstrong Family***

DISPLAY SECTION

This space is allocated for the display of Pot Plants. You are encouraged to bring extra plants, which will not be judged, but will enhance our display for our show.

'BRING ONE – SWAP ONE' SECTION

This space is allocated for you to bring a cutting or small pot which you then may swap with someone else

We gratefully thank the sponsors of prizes and prize monies for our Pot Plant Section.

Section J – HORTICULTURE

Chief Steward: Lesley Sorley 0401954064 lesleysorley@bigpond.com

(Assistant Stewards: Edna Lowien, Marilyn Caldwell, Amanda Nation)

ENTRY FEE: 50 cents (with completed entry form). Free for School aged students and Special Classes.

CLOSING DATE FOR ENTRIES: Delivered to the Pavilion by 9.30 am on Friday 28 February 2025.

PRIZE MONEY: 1ST - \$2, 2nd – \$1 (except where otherwise stated)

JUDGING TIME: 10am

1. All exhibits must be grown by the competitor (except for the Floral Work classes).
2. Entries must be accompanied by a completed entry form and correct money. No change will be given.
3. Where equal first is awarded, first and second prizes are divided.
4. Container and vases will not be returned.
5. The Show Society will supply containers for Blooms. [Green bottles for J1---J41]
6. Stewards will discard cut flower entries at the conclusion of the show (after 2.30 Sunday) if not advised otherwise on the entry form.
7. Entries can be collected from the Pavilion after 2.00pm on Sunday (3rd March), once signed out by the Chief Steward, or by prior arrangement.

BLOOMS

Roses

- J 1 Red rose, one bloom
- J 2 Yellow rose, one bloom
- J 3 Pink rose, one bloom
- J 4 White rose, one bloom
- J 5 Rose, any other colour not specified, one bloom
- J 6 Rose, bi-colour
- J 7 Rose, Polyantha, or Floribunda, one truss
- J 8 Rose, miniature
- J 9 Three Roses, one variety from bud to full bloom
- J 10 Rose, fragrant, any colour/variety

Champion Rose selected from J1- 10:

Edna Cahill Memorial Trophy donated by her daughter **Diana Scheuerle**

Dahlias

- J 11 Specimen, Decorative any type
- J 12 Specimen, Cactus any size
- J 13 Specimen, Pompom under 31 mm (1¼")
- J 14 Specimen, Bi-Colour
- J 15 Dahlia, any other variety

Champion Dahlia selected from J11-15:

Edna Cahill Memorial Trophy donated by her daughter **Diana Scheuerle**

Prizemoney for Most Points Roses and Dahlias J1-J15 donated by **Jean Sorley**

CUT FLOWERS

- J 16 Specimen Gerbera Single
- J 17 Specimen Gerbera Double
- J 18 Specimen Gerbera any other variety
- J 19 Specimen Carnation single stem variety
- J 20 Specimen Carnation (multi head)
- J 21 Specimen Marigold
- J 22 Specimen Zinnia
- J 23 Specimen Gladioli Spike
- J 24 Specimen Geranium single (Zonal variety)
- J 25 Specimen Geranium double [zonal variety]
- J 26 Specimen Geranium (Ivy varieties)
- J 27 Specimen Strelitzia [bird of paradise.]
- J 28 Stative two stems/cuts
- J 29 Salvia any variety three stems
- J 30 Three different species of same coloured flowers.
- J 31 Two different flowers red

Champion Bloom of the Show – Trophy donated by **Mrs D McNamara** plus **Society Ribbon**
Most Points -J16-J41 **Mrs Marie Patch Memorial Trophy** donated by **Greg and Joy Patch and Family**

COLLECTIONS

- J 42 Collection Roses (not less than 5 blooms)
- J 43 Collection cluster roses floribunda/polyantha [5 stems]
- J 44 Collection Dahlias (not less than 5 blooms)
- J 45 Collection Gerberas (not less than 5 blooms)
- J 46 Collection Carnations (not less than 5 blooms)
- J 47 Collection Marigolds (not less than 5 blooms)
- J 48 Collection Geraniums (not less than 5 blooms)
- J 49 Collection Zinnia (not less than 5 blooms)
- J 50 Collection Bougainvillea (not less than 3 blooms)
- J 51 Collection from one garden (not less than 5 blooms)
- J 52 Collection Foliage, (not less than 5 cuts)
- J 53 Collection, one shade, at least three varieties, one container (not less than 5 blooms)
- J 54 Collection mixed flowers at least 3 different colours, one container (not less than 5 blooms)
- J 55 Collection 5 stems, 1 variety, minimum 3 different colours
- J 56 Collection Rose buds (not less than 5 blooms)
- J 57 Collection Daisies (not less than 5 cuts)

Champion Collection of the Show J42- J57- **Trophy plus Society Ribbon.**

MISCELLANEOUS

- J 32 Specimen Australian Native Tree
- J 33 Specimen Flowering Shrub
- J 34 Protea one bloom/stem
- J 35 Specimen Flowering Tree
- J 36 Specimen Creeper
- J 37 Specimen Bougainvillea
- J 38 Specimen of plant in Berry
- J 39 Specimen of Decorative Leaf/foilage
- J 40 Specimen Coleus
- J 41 Cut flower. spike, truss, or bloom not previously provided for (Not Australian Native)

Champion Miscellaneous J32 -J41
Trophy donated by **Sorley Family,**
Alma Droughtmaster Stud

FLORAL WORK

- 1 Exhibits in this section need not be grown by the exhibitors.
- 2 Exhibitors must arrange their own exhibits.
- 3 Each exhibit must be marked with section number.
- 4 All exhibits must be viewed from one side only.
- 5 Exhibits must not be handled once delivered to stewards.

Open

- J 58 Arrangement using native flowers and foliage
- J 59 Two of a kind (2 flowers, 2 leaves, 2 sticks, 2 stones)
- J 60 Fresh Arrangement – “Making the most of One Bloom” (may include foliage)
- J 61 Dried Arrangement
- J 62 Own choice – to incorporate theme element “WINDMILLS”

Novice

(Exhibitor has not won a prize in the class in which they are competing in the last 3 years)

- J 63 Arrangement using five flowers and foliage
- J 64 Corsage suitable for high school graduation/wedding
- J 65 Own choice to incorporate theme element “WINDMILLS”

Champion Floral Exhibit J 58-65

Jack Saunders Memorial Trophy donated by **Mrs Pat Saunders** plus **Society Ribbon**

Most Points Floral Art:

Trophy donated by **Bell Show Society**

JUNIOR HORTICULTURE

Entry free

PRIZE MONEY: 1st \$6 2nd \$3

(\$20 prize money donated by Judy Cook)

- 1 Exhibits in this section need not be grown by the exhibitors.
- 2 Exhibitors must arrange their own exhibits.
- 3 Each exhibit must be marked with section number.
- 4 All exhibits must be viewed from one side only.
- 5 Exhibits must not be handled once delivered to stewards.

KINDERGARTEN/PREP to Year 1

- J 66 Arrangement Using vegetable/or fruit as base with four flowers, greenery
- J 67 Floral display on container using wet sand, no more than 20cms

Year 2 to 6

J 68 Animal or creature made from fruit and/or vegetable/flowers/nuts/pine cones
J 69 “Fairy Garden” or “Dinosaur Garden” (to be made on any water retaining tray, no bigger than 30cm x30cm). Must include at least one fairy/dinosaur and some use of greenery and/or flowers)

J 70 Floral display on plate or saucer, flowers and leaves must float (no bigger than 30cm)

Year 7 to 10

J 71 Arrangement – Own choice (must include use of fresh flowers and foliage)

J 72 Picture made from leaves, seeds, and berries, A4 size

SPECIAL CLASSES

1 Free entry for all ages from Prep-Year10.

2 Every entry must be clearly identified with a name and school (if applicable) and accompanied by a completed entry form.

3 Entries should be handed to stewards on Friday 28th March 2025 by 9.30am.

4 Classes will be split on the day depending on number of exhibits received.

5 PRIZE MONEY: 1st \$6 2nd \$4.

J 73 GRASS HEAD

Method

Sprinkle some grass seeds into the bottom of a stocking foot and fill it with potting mix or sphagnum moss. Twist the stocking until it is the shape and size of tennis ball, and then tie it off leaving about 10cm dangling down at the bottom.

Use an elastic band to make a bulging nose in the stocking face.

Give your grass head a face, glue on googly eyes, pipe cleaners for eyebrows and any decorations you like. Half fill a small container (eg Yoghurt container) with water and place the head on top, so the stocking tail is dangling into the water. Use a spray bottle of water to moisten his head.

Place him on a windowsill that gets plenty of sun.
Check each day to make sure the stocking head remains damp.

A full head of hair takes 3-4 weeks to grow, and “greying and balding” will occur after about 6 weeks.



J 74 Small Floral display to incorporate theme “WINDMILLS”

Must include at least one plant element eg flower, leaf, seed and at least one paper windmill.

Materials

Crayons or Markers

Pencil

Push-Pin

Straw

Tools

Scissors

Instructions

- 1 Cut a piece of paper into a perfect square. Use coloured paper/decorate plain paper.
- 2 Fold paper diagonally into a triangle and crease, fold in the opposite direction and crease. You should have an X in the middle
- 3 Cut along the creases about half way to the middle. Be sure not to cut all the way.
- 4 Bend each corner to the middle. Make sure to bend not fold.
- 5 Once all 4 corners are in the middle push the push pin through them all as well as the straw or eraser.



Section KA – FINE ART

Chief Steward: Jean Sorley (07) 4663 1339 bellartgroupinc@gmail.com

(Assistant Stewards: Members of the Bell Art Group Inc.)

ENTRY FEE: \$5

CLOSING DATE FOR ENTRIES: Thursday 27th February 2025

DROP-OFF FOR ENTRIES: Bell Bunya Community Centre

PRIZE MONEY: 1st - \$40, 2nd - \$10, 3rd - \$5

SECTION RULES:

1. Entries must be left at the BELL BUNYA COMMUNITY CENTRE (not the Bell Show Pavilion) on or before Thursday 27th February 2025, during the Community Centre opening hours (9am – 2pm) or by prior arrangement.
2. Responsibility rests with the exhibitor to ensure that EXHIBITS MUST BE ABLE TO BE HUNG SAFELY. NB “D” hooks are essential. Stewards reserve the right to reject exhibits considered unsafe.
3. Exhibits must be clearly labelled on the back, with Artist’s name, address, phone number, title of work, plus Class, ie section KA1 Local or KA2 Open
4. All reasonable care will be taken with each exhibit and the Bell Show Society and Stewards will not be liable for any loss or damage if and howsoever it occurs.
5. Paintings with wet paint will not be accepted.
6. Each exhibit must be the original work of the Exhibitor and not have won a first prize at any previous Bell Show.
7. The judge’s decision will be final and no correspondence entered into.
8. Stewards are responsible for hanging exhibits and demounting exhibits.
9. The Stewards reserve the right to reject or remove works considered unsuitable, and their decision is final.
10. Diptych and Triptych works need to be secure together as one artwork and must meet the safe hanging requirements.
11. Size limitation: Size of Exhibit is not to exceed a maximum of 100cm x 100cm, including frame.
12. Exhibits at the Bell Show Pavilion can be collected from the Pavilion after 2pm Sunday 2nd March 2025 once signed out by the Steward on duty. Uncollected exhibits will be taken to the Bell Bunya Community Centre.

KA1 LOCAL. Any subject, any medium.

(For persons residing within 30km radius of Bell)

Prizemoney donated by Bell Art Group Inc. and Jean Sorley

KA2 OPEN. Any subject, any medium.

Prizemoney donated by Bell Show Society Inc & Bell Bunya Community Centre.

Champion Exhibit judged from KA1 to KA2. Voucher from ‘Poppies on the Hill’ Bunya Mountains, plus Bell Show Society Inc Champion Ribbon & Card

Section K – PHOTOGRAPHY

Chief Steward: Amelia Wilson 0447 005 090 gotchamate1@hotmail.com

ENTRY FEE: Open Section - 50 cents - Youth and Child Section: free

CLOSING DATE FOR ENTRIES: 2.30pm on Friday 21st February 2025

PRIZE MONEY: 1st - \$2, 2nd – \$1

SECTION RULES:

1. Entries must have been photographed by the entrant.
2. Amateur photographers only. You may be a hobbyist, an enthusiast or semi-professional provided that your primary source of income does not come from your photography work
3. Entrants must take full responsibility for ensuring that any person depicted in their images give their permission for their image to be used.
4. The same image may not be entered into more than one class.
5. A maximum of 3 entries per entrant in each class.
6. Any person may enter the Open Section.
7. Entries from previous Bell Show Photography Competition are excluded.
8. Preferred photo size 5"x7" (13cmx18cm). The smaller size of 4"x6" (10cmx15cm) is also acceptable.
9. All entries must be securely mounted on black A5 cardboard to allow for the entry to be pinned. Use glue which does not buckle.
10. All entries must have the Exhibitor's name, address, phone number and class number clearly marked on the back of the cardboard at the top left-hand corner. Hint: use sticky labels or white marker pen.
11. Photographs which are framed, have captions, are written on, or are not backed with black cardboard will not be displayed or eligible for judging.
12. Points: 1st place – 3 points, 2nd place – 2 points, Highly Commended – 1 point. In the event of a tie for points, the Ribbon and Trophy will be awarded to the exhibitor gaining the most First Prizes.
13. Entries can be delivered to the Bell-Bunya Community Centre by **3.00pm on Friday 21st February 2025**. No late entries will be accepted.
14. Alternative pick-up points in the district for the collection of entries may be negotiated with the Chief Steward.
15. Entries can be collected from the Pavilion after 2.00pm Sunday 2nd March 2025, once signed out by the Chief Steward, or by prior arrangement.

OPEN SECTION: COLOUR PRINTS

- K1 Windmill Photo Shoot (2024 SHOW FEATURE)
- K2 Any animal close-up
- K3 Sunrise or Sunset
- K4 Kids with pets
- K5 Coastline or Beach
- K6 Young and old together
- K7 Flower close-up
- K8 Australian bird close-up
- K9 Show us your workshop!

- K10 Travel adventures
- K11 Any other subject

ENLARGEMENT – Maximum A4 size (21cmx29cm)

- K12 Any Bell Show activity
- K13 Portrait - person or persons (head and shoulders only)
- K14 Any Long Exposure image
- K15 Any Drone image
- K16 Celebrating rain
- K17 Harvest season
- K18 Cattle yard action
- K19 Horses at work

Open Section Champion: (K1-K19) - Ribbon and Trophy

Open Section Reserve Champion: (K1-K19) - Ribbon and Trophy

Open Section Most Points: (K1-K19) - Trophy

YOUTH SECTION: (15 years and under)

- K20 Windmill Photo Photo Shoot (2024 SHOW FEATURE)
- K21 Animal, bird or insect close-up
- K22 Best animal buddy

CHILD SECTION: (6 years and under)

- K23 Windmill Photo Photo Shoot (2024 SHOW FEATURE)
- K24 My pet
- K25 Any subject

Junior Section Champion: (K20-K25) - Ribbon and Trophy

Junior Section Reserve Champion: (K20-K25) - Ribbon and Trophy

Junior Section Most Points: (K20-K25) – Trophy

Best 2024 Windmill Photo Photo: Trophy

Grand Champion Print of the Show: Ribbon and Trophy

*All Trophies generously donated by **Bell Tourist Park and Hedge's Sports Store, Dalby***

Section L – COOKERY

Steward: Sharon McNamara –sharonm2301@gmail.com

ENTRY FEE: 50 cents per item. SCHOOL STUDENTS: free entry.

CLOSING DATE FOR ENTRIES: All entries to the Pavilion before **9.30 am on Friday 28th February 2025**

PRIZE MONEY: 1ST - \$2, 2nd – \$1 (except where otherwise stated)

1. All exhibits in this section must be made by amateurs.
2. The Judge's decision is final.
3. Full cakes only. Half of exhibit may be removed after judging.
4. No Packet Mix allowed unless stated. When stated, *Recipe provided*, the recipe must be used.
5. Third place will be given at the Judge's discretion.
6. All slice pieces are to be cut to 5cm square.
7. Decorated Cakes/Cupcakes are to be judged on decoration only.

We sincerely thank the following families and individuals for their continued support of this Section.

Family of Zara McPhee – Chocolate Sponge trophy

Family of Agnes McNamara – Champion Sponge trophy

Family of Val McNamara – Sponge Roll trophy

Family of Betty Strang – Rich Fruit Cake trophy

Family of I Brewer – *prizemoney* Pumpkin Fruit Cake

Family of Mavis Koehler – Feature Cake Division 2 trophy

Family of Olive Anderton – Carrot Cake trophy

Family of Felicity Kruger (nee Scheuerle) – Peach Blossom trophy

Family of Edna Astbury – *prizemoney* Banana Cake

Family of Vi Scheuerle – Sultana Cake & Champion Cake trophies

Family of Dorothy Sorley – *prizemoney* Anzac Biscuits

Family of May Sorley – Most Points Division 2 Trophy

Family of Mrs J Nelder – prizemoney Most Points Division 8

Rebecca Pope – Feature Cake Division 1 trophy

Ian McNamara (Australia All Over) - Perpetual Trophies – Jam Drops

Joan van Kujck – Keepsake Trophies – Jam Drops

Bell Show Society

Gaffney Family

Williams family

Sharon McNamara

Helen McKee

Coralie Sorley

Manny Sorley

Majella McNamara

Leanne Lloyd

Brumby's Dalby

Laffy Tiling

Edna McLean

Cleaning and Catering Supplies Dalby

Bell State School P&C

Dalby & District FSD

BMO Accountants

DIVISION 1 - OPEN

L1 Victoria Sponge. Lightly dusted

L2 Fielders Sponge, not iced, thin icing filling, recipe on packet

L3 Chocolate Sponge, chocolate filling, lightly dusted (*Mrs Zara McPhee Memorial Trophy*)

L4 Butter Sponge Sandwich, 1 tablespoon butter, butter icing filling, lightly dusted

L5 Sponge Roll, ends to be cut off (*Mrs Val McNamara Memorial Trophy*)

Champion Sponge: To be selected from L1 – L5. Mrs Agnes McNamara Memorial Trophy donated by the McNamara Family, and Bell Show Society Ribbon.

L6 Rich Fruit Cake, on a board, 20 cm square tin (*Mrs Betty Strang Memorial Trophy*)

(Winner of this class may be eligible to compete in Darling Downs Sub-Chamber Final. Contact Secretary for details.)

L7 Boiled Fruit Cake, 20cm round tin, 375g fruit

L8 Sultana Cake, round tin (*Mrs V Scheuerle Memorial Trophy*)

L9 Pumpkin Fruit Cake, square tin, 375g fruit (*1st prizemoney donated in memory of Mrs I Brewer*)

L10 Date Loaf

L11 Carrot Cake, lemon icing on top only, round tin (*Mrs Olive Anderton Memorial Trophy*)

L12 Peach Blossom Cake, bar tin, iced delicate pink. (*Mrs Felicity Kruger Memorial Trophy*)

L13 Chocolate Cake, FEATURE CAKE, round, iced on top. (*Feature Cake Trophy donated by Rebecca Pope*)

L14 Orange Bar, orange icing on top only

L15 Banana Cake, lemon icing on top, bar or loaf tin (*1st prizemoney donated in memory of Mrs Edna Astbury*)

L16 Marble Cake, pale pink icing on top only, round tin

L17 Cinnamon Tea Cake, round tin

L18 Gluten Free cake, any variety

L19 Jam Drops, (4) dark red jam, baked in traditional method with jam cooked in with biscuit

1st \$25. 2nd \$20 Prizemoney donated by Bell Show Society.

L20 Farmers Jam Drops, (4) Farmers size biscuit, dark red jam, baked in traditional method with jam cooked in with biscuit *1st \$20, 2nd \$10 Prizemoney donated by Mrs Helen McKee*

L21 Sweet Muffins, (4) 5cm base size, any variety, no paper cases, to be named

L22 Sultana Scones, (4) 5cm diameter base, not joined

L23 Pumpkin Scones, (4) 5cm diameter base, not joined

L24 Plain Scones, (4) 5cm diameter base, not joined

L25 Pikelets (4)

L26 Bread, any variety, including Sour Dough, Damper or Bread Machine

L27 Iced Patty Cakes, (4), no patty cups to be used, iced with normal icing only, 4cm base.

L28 Chocolate Slice, (4), chocolate icing on top

L29 Date Slice, (4), iced on top optional

L30 Anzac Biscuits (4)

L31 Melting Moments Biscuits (4)

L32 Chocolate Chip Biscuits, (4)

L33 Monte Carlo Biscuits (joined with jam & icing), (4)

L34 Plate of 6 Biscuits, 2 each of Melting Moments, Chocolate Chip & Monto Carlo

Most Points in Division 1 *\$10 voucher donated by Brumby's Dalby.*

DIVISION 2 – Next Generation (40 years and under)

L35 Chocolate Cake, FEATURE CAKE, round, iced on top, RECIPE PROVIDED. *(Mrs Mavis Koehler Memorial Trophy)*

L36 Decorated Birthday Cake (dummies may be used)

L37 Anzac Biscuits, (4) Under 18 years of age, RECIPE PROVIDED, 5cm in diameter & crisp

L38 Anzac Biscuits, (4) 18 – 40 years of age (as at 1st May), RECIPE PROVIDED, 5cm in diameter & crisp

(Winner of this class may be eligible to compete in Darling Downs Sub-Chamber Final. Contact Secretary for details.)

L39 Chocolate Slice, (4), chocolate icing on top

L40 Chocolate Chip Biscuits, (4)

L41 Any Item from Division 4

L42 Jam Drops, (4) dark red jam, baked in traditional method with jam cooked in with biscuit 1st \$10
donated by Laffy Tiling. \$2nd \$5 donated by the Williams Family.

Prizemoney for L35-L42 donated by Williams Family

Most Points in Division 2 in honour of Foundation President of the Ladies Committee, Mrs May Sorley, Trophy donated by S & L Sorley and C & K Sorley.

DIVISION 3 – SWEETS

L43 Marshmallows (4) 3cm x 3cm.

L44 Coconut Ice, to be boiled (4) 3cm x 3cm.

L45 Chocolate Fudge (4) 3cm x 3cm.

L46 Russian Caramel (4) 3cm x 3cm.

Prizemoney for L43-L46 donated by R Pope

Most points Division 3 Voucher donated by Brumby's Dalby

DIVISION 4 - PRESERVES

Preserves to be in bottles with lids of 250g or less capacity, except in the case of butters as listed. Lids and bottles are to be labelled separately with contents description. All entries must be easy to open, previously checked for freshness and are not to have decorative trim.

L47 Lemon Butter, one bottle, 250g

L48 Any Other Fruit Butter, one bottle, 250g

L49 Tomato Jam

L50 Fig Jam

L51 Plum Jam

L52 Apricot Jam

L53 Rosella Jam

L54 Marmalade

L55 Peach Jam

L56 Any Berry Jam

L57 Jam, any other variety

L58 Mayonnaise

L59 Pickles, any variety

L60 Relish

L61 Chutney

L62 Sweet Sauce

L63 Savoury Sauce

L64 Pickled vegetable

Prizemoney for L47 – L64 donated by Williams family and Laffy family

Most points in Division 4 \$10 donated by E McLean

DIVISION 5 – JUNIOR COOKING including Prep students (Age to be stated on entry form)

L65 Edible Bracelet (can be made from Lollies or Pasta)

L66 Decorated Arrowroot Biscuits (3)

Prizemoney for L65-L66 donated by S McNamara

Most point in Division 5 \$5 prize money donated by S McNamara

DIVISION 6 – PRIMARY SCHOOL COOKING (Grade 1 to Grade 3)

L67 Jam drops, (4), dark red jam, baked in traditional method with jam cooked in with biscuit

L68 Chocolates, moulded, unfilled (4)

L69 Chocolate Cake, round tin, iced on top, packet mix optional

L70 Decorated Cup Cakes (2) in paper cases, 5 cm base size, packet mix optional

Prizemoney for L67 – L70 donated by Mrs Manny Sorley

Most point in Division 6 \$5 prize money donated by Mrs Coralie Sorley

DIVISION 7 – PRIMARY SCHOOL COOKING (Grade 4 to Grade 6)

L71 Jam drops, (4), dark red jam, baked in traditional method with jam cooked in with biscuit

L72 Chocolates, moulded, unfilled (4)

L73 Chocolate Cake, round tin, iced on top, packet mix optional

L74 Decorated Cup Cakes (2) in paper cases, 5 cm base size, packet mix optional

Prizemoney for L71-L74 donated by Mrs Helen McKee & S McNamara

Most point in Division 7 \$5 prize money donated by Mrs Helen McKee

DIVISION 8 – HIGH SCHOOL COOKING

L75 Jam drops, (4), dark red jam, baked in traditional method with jam cooked in with biscuit

L76 Decorated Cup Cakes (4), in paper cases, 5 cm base size, packet mix optional

L77 Chocolate Cake, round tin, iced on top, packet mix optional

L78 Chocolate fudge (4)

L79 Decorated Birthday Cake (dummies may be used) 1st \$5, 2nd \$2 Prizemoney donated in memory of Mrs Betty Strang by her family

Prizemoney for L75-L78 donated by Brumby's Dalby, and Cleaning and Catering Supplies Dalby

Most points in Division 8 - \$5 donated in memory of Mrs J Nelder, by her family

Champion Jam Drops – To be selected from L19, L20 & L42 “**JOHN BOURNE - Australian All Over**” Perpetual Trophy, donated by Ian McNamara. Keepsake Trophy donated by Joan van Kuijck

Champion Anzac Biscuits: To be selected from L30, L37 & L38. 1st \$20. 2nd \$10 Prizemoney donated in memory of Mrs Dorothy Sorley

Champion Cake of Show: Mrs V Scheuerle Memorial Trophy donated by her family, and Bell Show Society Ribbon.

Perpetual Trophy for Best Jam Drops by a School Student (L67, L71 and L75)

“**Bill Scott - Australia All Over**” Perpetual Trophy donated by Ian McNamara. Keepsake Trophy donated by Joan van Kuijck.

Cookery Section Recipes

CHOCOLATE CAKE - FEATURE CAKE

Division 1 - L13

Division 2 - L35

Ingredients: 3 tbsp Butter, 1 cup SR Flour, 2 level tbsp Cocoa, $\frac{3}{4}$ cup Sugar, $\frac{1}{2}$ cup Milk, 2 Eggs, Vanilla, pinch Salt.

Method: Beat together for 6 minutes. Bake in a round tin and cook for approx. 35-40 minutes (or until a skewer comes out clean).

ANZAC BISCUITS

Division 2 – L37 & L38

Ingredients: 125g butter – chopped, 1 cup Plain Flour, $\frac{1}{2}$ tsp Bicarb Soda, 1 cup Rolled Oats, 1 cup Caster Sugar, 2 tbs Golden Syrup, 2 tbs boiling water, $\frac{3}{4}$ cup desiccated coconut

Method: Combine butter and golden syrup in a pan, stir over heat until butter is melted. Stir in combined soda and water, then remaining ingredients. Mix well. Drop rounded teaspoons of mixture about 4cm apart on a greased oven tray and flatten slightly. Bake in a slow oven for about 20 minutes or until slightly brown. Cool on tray.

Biscuit size to be 5cm in diameter and crisp. 4 biscuits to be presented for judging.

Section M – NEEDLEWORK

Chief Steward: Jan Kane 07 4663 1274 jankane22@bigpond.com

(Assistant Stewards: R Andrew, R Newton, E Brewer, J Hunter, J Warby, L Lloyd, B Stirling)

ENTRY FEE: 50 cents (with completed entry form) School aged students: free entry

CLOSING DATE FOR ENTRIES: Delivered to the Pavilion by **9.30 am on Friday 28 February 2025.**

PRIZE MONEY: 1ST - \$2, 2nd – \$1 (except where otherwise stated)

SECTION RULES:

1. Entries in this section will not be accepted from exhibitors outside a radius of 120 km of Bell, unless such exhibits are nominated through a local resident of the district, (a local resident shall be deemed to be a resident within 30km radius of Bell).
2. All work must be the bona fide work of the exhibitor, pre-shrinking allowed. Back of work must be visible unless otherwise stated.
3. Entries must be clearly labelled before delivery showing the exhibitor's name and class entered.
4. Entries must be delivered to the Pavilion by **9.30 am on Friday 28 February 2025.**
5. Exhibits can be entered in one Section or Class only.
6. Knitted bands are allowed on crochet garments.
7. All seams in Crochet and Knitting to be left to Judges' discretion.
8. Exhibits which have won a first prize at a previous Bell Show cannot be exhibited again in the same class
9. A garment is something worn. An article is something not worn. An item can be either. An outfit is two or more garments to create a set.
10. Very old or soiled work will not be accepted.
11. Entries can be collected from the Pavilion after 2.00 pm on Sunday 2nd March 2025, once signed out by the Chief Steward, or by prior arrangement.

HANDWORK

- M1 Article in Hardanger.
- M2 Item in Stitchery, eg Redwork, etc.
- M3 Item of Creative Embroidery, eg Bullion, Brazillian, etc.
- M4 Article in Candlewicking.
- M5 Any Embroidered Article.
- M6 Article in Counted Cross Stitch.
- M7 Tapestry Article.
- M8 Any Other Article in Canvas Work eg Long Stitch, etc.
- M9 Article featuring Tatting.

Champion piece of Handwork from M1 to M9, Prize donated by Mrs Eileen Pope

MACHINE WORK

- M10 Cushion.
- M11 Infant's Garment or Outfit.
- M12 Toddler's Garment or Outfit.
- M13 Girl's Frock.
- M14 Boy's Garment.
- M15 Child's Outfit.
- M16 Child's Night Attire.
- M17 Blouse or Shirt.
- M18 Lady's Frock or Outfit.
- M19 Special Occasion Frock or Outfit.
- M20 Garment in Heirloom Sewing.
- M21 Any Garment in Stretch Material.
- M22 Something New from Something Old.
- M23 Article Suitable for a Gift.
- M24 Fabric Bag.
- M25 Article, machine embroidery.
- M26 Article not already mentioned.

*Champion piece of Machine Work from M10 to M26, \$25 voucher donated by **The Coleman Family***

PATCHWORK/QUILTING

- M27 Patchwork Table Runner or Centre, to suit any shape table.
- M28 Patchwork Bag.
- M29 Patchwork Cushion.
- M30 Patchwork Wall Hanging, pegs, tabs or rod pocket.
- M31 Small Patchwork Quilt, eg cot, lap, table. (45" x 60" or less)
- M32 Patchwork Article Hand Pieced, eg English Paper Piecing.
- M33 Patchwork Bed Quilt.
- M34 Patchwork Quilt, professional quilting allowed.
- M35 Quilt, featuring more than one technique, eg Pieced, Applique, Embroidery.
- M36 Article, Hand Quilted.
- M37 Article, Machine Quilted, professional quilting not allowed.

*Champion piece of Patchwork/Quilting from M27 to M37, \$20 Voucher donated by **Pips 'n' Cherries**.
Champion Quilt eligible to compete at the Royal Queensland Show (Ekka).*

APPLIQUÉ

- M38 Cushion, Traditional, ie handworked, needle turn.
- M39 Cushion, Naïve, ie blanket stitch, running stitch.
- M40 Wall Hanging, Traditional.
- M41 Wall Hanging, Naïve.
- M42 Quilt, Traditional.
- M43 Quilt, Naïve.
- M44 Article, Machine Appliqué
- M45 Other Article, any Appliqué Technique.

*Champion piece of Appliqué from M38 to M45, \$25 voucher donated by **The Coleman Family**.*

CROCHET

Fine Thread - No. 40 and over

Coarse Thread - No. 20 or under.

- M46 Table Centre, Fine Thread.
- M47 Table Centre, Coarse Thread.
- M48 Doiley, up to 9" or 23 cm in diameter.
- M49 Duchess Set.
- M50 Rug.
- M51 Handkerchief, Crochet Edge and/or Corner.
- M52 Edging featured on an Item.
- M53 Any Trim on Towelling item, eg washer, kitchen towel.
- M54 Coat Hanger.
- M55 Infant's Garment.
- M56 Article Not Already Mentioned in Wool.
- M57 Article Not Already Mentioned in Cotton.

Champion piece of Crochet from M46 - M57, Prize donated by Mrs V McGuire

KNITTING

- M58 Beanie or Bonnet.
- M59 Infant's Garment.
- M60 Adult's Cardigan or Jumper.
- M61 Child's Cardigan or Jumper.
- M62 Sleeveless Pullover or Vest.
- M63 Rug.
- M64 Any Other Article

Champion piece of Knitting from M58 to M64, Memorial Trophy donated by the family of L M McGuire.

NOVICE – Open to competitors who have not won a prize at any previous show.

- M65 Item in Stitchery
- M66 Article in canvas work, includes Aida and Linen
- M67 Cushion, any medium.
- M68 Child's Garment, machine and/or hand sewn.
- M69 Adult's Garment, machine and/or hand sewn.
- M70 Crochet Item.
- M71 Knitted Item.
- M72 Patchwork Bag.
- M73 Patchwork Quilt.
- M74 Appliqué Article, needle turn.
- M75 Appliqué Article, naïve.

Champion item Novice Section from M65 to M75, \$25 voucher donated by Wendy's on Cunningham, Dalby.

SENIOR SECTION - 65 YEARS OF AGE AND OVER (Work must be done at this age or over)

- M76 Embroidered Article, back to be visible.
- M77 Article in Cross Stitch.
- M78 Crochet Table Centre or Doiley, in cotton.

- M79 Crochet Knee Rug.
- M80 Handkerchief, Crochet Edge and/or Corner.
- M81 Knitted Item.
- M82 Knitted Knee Rug.
- M83 Any Trim on Towelling item, eg washer, kitchen towel.
- M84 Coat Hanger, any medium.
- M85 Patchwork Article.
- M86 Something New from Something Old
- M87 Article not already mentioned.

*Champion item Senior Section from M76 – M87, Jessie Anderton Memorial Trophy donated by the **Anderton family***

JUNIOR SECTION - ENTRY FREE

12 to 15 YEARS

- M88 Article in Stitchery.
- M89 Cushion, any medium.
- M90 Knitted Item.
- M91 Item, machine and/or hand sewn.
- M92 Item Not Already Mentioned.
- M93 Tote Bag, as per pattern provided in this schedule.
1st - \$15, 2nd - \$5, *Prize money donated by the **Kane Family**.*

*Champion item M88 to M93, \$20 donated by **Ms Bev Stirling**.*

11 YEARS AND UNDER

- M94 Article in Stitchery.
- M95 Cushion, any medium.
- M96 Knitted Item.
- M97 Item, machine and/or hand sewn.
- M98 Item Not Already Mentioned.
- M99 Tote Bag, as per pattern provided in this schedule.
1st - \$15, 2nd - \$5, *Prize money donated by the **Kane Family**.*

*Champion item M94 to M99, \$20 donated by **Ms Bev Stirling**.*

*Grand Champion Piece from Section M – Needlework, excluding crochet and knitting.
\$25 Voucher donated by **The Coleman Family**.*

*Grand Champion Piece of Crochet from Open, Novice and Senior.
\$20 donated by **Creative Embroidery**.*

*Grand Champion Piece of Knitting from Open, Novice and Senior.
Joan Deans Memorial, \$25 donated by **Graeme and Jenny Frost**.*

*Supreme Champion Piece from Section M - Needlework.
Erica Derrick Memorial Trophy donated by **Bell Show Society Inc**.*

We gratefully thank our sponsors for their support of the Needlework Section: E Pope, Wendy's on Cunningham, The Coleman Family, Graeme and Jenny Frost, Kane Family, Pips n Cherries, V McGuire, McGuire Family, Anderton Family, Ms B Stirling, Creative Embroidery, Bell Show Society.

TOTE BAG

Requirements

Outer fabric cut 2 pieces 16 inches x 14 inches

Lining fabric cut 2 pieces 16 inches x 14 inches

Handle fabric cut 4 pieces 21 inches x 2 inches

Iron on pellon cut 2 pieces 16 inches x 14 inches and 2 pieces 21 inches x 2 inches for handles

Instructions

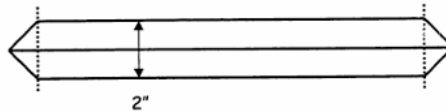
A ¼ inch seam is used unless otherwise stated.

Iron pellon onto outer bag pieces and 2 handle pieces.

Place front and back bag panels on top of each other right sides together. Machine sew together along three sides, leaving the top end open. 16 inches is the top end.

Sew bag lining fabric together as above.

On outer bag fold the side seam of your bag against the centre bottom of the bag to form a triangle (This will form the base of your bag). Stitch across where the triangle measures approximately 2 inches. Repeat at the other end. Trim corners and turn bag right side out. Repeat this on the bag lining but leave the lining inside out.



Handles – Iron pellon onto 2 pieces. Place handle pieces right sides together (one piece with pellon and one without) and sew both long edges together forming a tube. Turn out and iron. Top stitch ¼ inch in from edge on both sides.

Pin handles to outer bag top 3 ½ inches inside of each side seam. Sew into position to secure.

Place main bag (right side OUT) inside lining bag (right side IN) and pin into position so that the side seams meet. Machine sew together all along the top seam, leaving a gap between the two handle straps for turning.

Turn bag right side out through the turning gap and push lining inside main bag. Top stitch all around the top edge of the bag.

Enjoy using your finished project.

Section N – HANDICRAFTS

Chief Steward: Rebecca Brown 0488 788 374 coondambograzing@gmail.com

(Assistant Steward: D Barber)

ENTRY FEE: 50 cents (with completed entry form) **SCHOOL STUDENTS:** free entry

PRIZE MONEY: 1ST - \$2, 2nd – \$1 (except where otherwise stated)

SECTION RULES: All work to be the bona fide work of the exhibitor.

1. Exhibits which have won a first prize at a Bell Show cannot be exhibited in the same class again.
2. Entries must be clearly labelled before delivery (showing the exhibitor's name and class entered).
3. Entries must be delivered to the Pavilion by **9.30am on Friday 28th February 2025.**
4. Entries can be collected from the Pavilion after 2pm on Sunday 2nd March 2025, once signed out by the Chief Steward, or by prior arrangement.

OPEN HANDICRAFT

- N1 Beading, any article, mounted for display.
- N2 Jewellery, one piece or set, any technique or combination of techniques, mounted for display.
- N3 Hair piece/headpiece/fascinator, any technique, mounted for display.
- N4 Christmas Decoration, hard or soft medium.
- N5 Creative Greeting Card, 1, handmade, Christmas.
- N6 Creative Greeting Cards/gift tag, 3, handmade and distinct, excluding Christmas.
- N7 Table Decoration, any medium, Not to Exceed 60cm long or high.
- N8 Coat Hanger, any medium.
- N9 Macrame any article, not to exceed 70cm wide/long.
- N10 Diamond art, Framed, not to exceed 50cm x 50cm.
- N11 Painting, workshop directed, Eg (Paint and Sip), not to exceed 60x60cm
- N12 Resin work, any article, not to exceed 50cm x 50cm.
- N13 Leatherwork, any other Technique or Article.
- N14 Recycled Materials, hard/soft, any medium, not to exceed 60cm.
- N15 Best Collection of Three Different Crafts, not to exceed 60cm.
- N16 House hold linen, decorated, any medium.
- N17 Toy, any medium, handmade, not to exceed 60cm.
- N18 Wall Hanging, any medium, ready to hang for display.
- N19 Woodwork, wood turned item, not to exceed 60cm.
- N20 Woodwork, any other article.
- N21 Metalwork, not to exceed 60cm.
- N22 Metal Art, not to exceed 60cm.
- N23 Article not already mentioned, hard medium.
- N24 Article not already mentioned, soft medium.

*Champion Craft from N1 to N24 - Voucher donated by **Wendy's on Cunningham Dalby.***

SCRAPBOOKING

All information is current at the time of printing. Please check our Website for the latest version changes.
Stay up-to-date by following the Bell Show Society Facebook page.

All Scrapbooking to be presented in clear plastic sleeves with double pages to be creatively joined. No albums please. *In the event of a large number of entries, 1st and 2nd place winners only will be displayed. If space permits, other entries will be displayed, but preference will be given to junior entries. Displayed entries will be placed into and hung by large snaplock bags.*

- N25 Scrapbooking, single or double page spread, Children/Babies.
- N26 Scrapbooking, single or double page spread, Agriculture/farming/Country.
- N27 Scrapbooking, single or double page spread, Pets/Animal.
- N28 Scrapbooking, single or double page spread, Event.
- N29 Scrapbooking, single or double page spread, Gardening.
- N30 Scrapbooking, single or double page spread, Heritage/History/Old fashioned.
- N31 Scrapbooking, single or double page spread, Family.
- N32 Scrapbooking, single or double page spread, Promoting Bell.
- N33 Scrapbooking, Journal, any technique/medium.

*Champion Scrapbooking N25 to N33 – Sponsored by **Bell Show Society**
Encouragement award N25 to N33 – Sponsored by **Bell Show Society***

NOVICE HANDICRAFT – 16 YEARS TO 25 YEARS Work to be completed at this age.

- N34 Handmade Creative Card, any medium.
- N35 Collection of Handmade soaps/ bath bombs.
- N36 Wall Hanging or Painting, any medium, can be from workshop, not to exceed 60cm x 60cm
- N37 Woodwork or Metalwork, not to exceed 60cm
- N38 Scraping Booking, any Technique
- N39 Any article not already mentioned.

*Champion Novice Handicraft N34 to N39 - Voucher donated by **Montana Welding Pty Ltd.***

SENIOR HANDICRAFT – 65 YEARS AND OVER Work to be completed at this age or over.

- N40 Creative Card, any medium.
- N41 Soft Toy, any medium.
- N42 Any article not already mentioned.

*Champion Senior Handicraft N40 to N42 - Voucher donated by **Sharon Blanck.***

*Most Points N1 to N42 - \$25 donated by **Western Downs Regional Council.***

JUNIOR HANDICRAFT - free entry (NO LEGO PLEASE)

Girls and Boys – 13 Years to 15 Years

- N43 Artwork A4 Framed eg. (Drawing/ painting) mixed Media.
- N44 Mask, not to exceed 60cm.
- N45 Hand Made Greeting Card, any occasion.
- N46 Collection of Handmade Soaps/Bath Bombs.
- N47 Diamond art, Framed, not to exceed 50 x50cm.
- N48 Any Article not already mentioned.

*Champion Craft from N43 to N48 - \$10 donated by **Williams Family***

Girls and Boys - 9 Years to 12 Years - free entry (NO LEGO PLEASE)

- N49 Artwork A4 Framed eg. (Drawing/ painting) mixed Media.
- N50 Mask, not to exceed 60cm
- N51 Hand Made Greeting Card, any occasion.
- N52 Friendship Bracelet. Mounted for display.
- N53 Diamond art, Framed, not to exceed 50 x50cm.
- N54 Any Article not already mentioned.

*Champion Craft from N49 to N54 - \$10 donated by **Williams Family***

Girls and Boys – 6 to 8 years - free entry (NO LEGO PLEASE)

- N55 Pet Rock, Not to Exceed 20cm.
- N56 Pipe Cleaner or paddle pop article.
- N57 Paper craft any technique.
- N58 Wall Hanging, any technique, not to exceed 60cm high.
- N59 Any article not already mentioned.

Girls and Boys – 5 years and under - free entry (NO LEGO PLEASE)

- N60 Pet Rock, not to exceed 20cm.
- N61 Pipe Cleaner or paddle pop article.
- N62 Paper craft any technique
- N63 Wall Hanging, any technique, not to exceed 60cm high.
- N64 Any article not already mentioned

*Champion Craft from N55 to N64 - \$10 donated by **Williams Family**.*

*Most Points in Junior Handicraft N43 to N64 - Voucher/ Gift donated by **The Toy Place**.*

LEGO – one entry per person

All Lego creations to be presented on a tray or board for easy display. Not to exceed 50cm x50cm.

- N65 5 years and under, not to exceed 50cm x50cm.
- N66 6 years to 8 years old, not to exceed 50cm x50cm.
- N67 9 years to 12 years old, not to exceed 50cm x50cm.
- N68 13 years to 15 years old, not to exceed 50cm x50cm.
- N69 15 years to adult, Complex Lego.

*Champion Lego From N65 to N69 \$10 Voucher donated by **Montana Welding Pty Ltd**.*

COLOURING COMPETION

Picture online www.bellshowandrodeo.com.au

PRIZE MONEY: 1ST - \$4, 2nd – \$3, 3rd - \$2, Highly Commended - \$1

1. No more than two entries per person.
2. Completed entries to be delivered to Bell State School office by 9.00am on Thursday 27th February.
3. All Entries to be clearly Named (first & last), and age in years.
4. No Champions in the colouring section.

N70	5 years and under
N71	6 years to 8 years old
N72	9 years to 11 years old
N73	12 years to 15 years old
N74	Open Colouring Framed & Ready to display, Open Design.

*All prize money donated by **Montana Welding Pty Ltd.***

Section P – SCHOOLWORK

Chief Steward: Vicki McGuire (07) 4679 2333

vmcgu1@eq.edu.au

Local schools are invited to provide a display of any additional classwork they would like to showcase in the School Section of the pavilion. Please contact the Bell State School for further details.

ENTRY FEE: Free

PRIZE MONEY: 1ST - \$3, 2nd - \$2, 3rd - \$1

CLOSING DATES FOR ENTRIES:

Creative Writing – 2.30pm **Friday 21st February 2025**

All other entries – 2.30pm **Monday 24th February 2025**

SECTION RULES:

1. All entries to be the child's own work.
2. Students from other schools should contact the Bell State School for further details before commencing work.
3. Entries must be clearly labelled before delivery showing the exhibitors name and class entered
4. Entries can be collected from Bell State School after 11am on Monday 3th March 2025.

ART

Any Medium (A3 size paper based, able to be hung)

P1 Kindy – My Choice, any medium

P2 Prep – My Choice, any medium

P3 Year 1 – My Choice, any medium

P4 Year 2 – My Choice, any medium

P5 Year 3 – My Choice, any medium

P6 Year 4 – My Choice, any medium

P7 Year 5 – My Choice, any medium

P8 Year 6 – My Choice, any medium

P9 Year 7/8 – My Choice, any medium

P10 Year 9/10 – My Choice, any medium

CREATIVE WRITING

P11 Year 7 – Descriptive story beginning (maximum 300 words)

P12 Year 8 – Descriptive story beginning (maximum 300 words)

P13 Year 9 – Descriptive story beginning (maximum 300 words)

P14 Year 10 – Descriptive story beginning (maximum 300 words)

HANDWRITING (Exercise book page – 2cm left hand margin in red pen.)

P15 Year 1 Handwriting
(up to 6 lines Year 1 ruling, print script in pencil)

P16 Year 2 Handwriting
(up to 6 lines Year 2 ruling, print script in pencil)

P17 Year 3 Handwriting
(half page Year 3 ruling, print script in pencil)

P18 Year 4 Handwriting
(half page Year 4 ruling, modern cursive in pencil)

- P19 Year 5 Handwriting
(half page, wide feint ruling, modern cursive in ink)
- P20 Year 6 Handwriting
(half page, wide feint ruling, modern cursive in ink)

DIGITAL DOCUMENTS (A4 Size) – Theme – (Windmills)

- P21 Year 5 – Poster based on theme
- P22 Year 6 - Poster based on theme
- P23 Year 7 - Poster based on theme
- P24 Year 8 - Poster based on theme
- P25 Year 9 - Poster based on theme

PHOTOGRAPHY

1. All photos MUST have been taken by the student.
2. Prints may be made on any surface paper and MUST BE MOUNTED READY FOR DISPLAY with a border no bigger than 2cm.

Prep – Year 2

- P26 My Friend
- P27 Artistically edited (original and edited photos to be included)

Year 3 – Year 6

- P28 My Friend
- P29 Artistically edited (original and edited photos to be included)

Year 7 – Year 10

- P30 Animal Study
- P31 Agriculture
- P32 Artistically edited (original and edited photos to be included)

*Most Points Primary School Work: \$20 donated by **Bell State School P & C Association.***

*Most Points Secondary School Work: \$20 donated by **Bell State School P & C Association.***

*Prize money for schoolwork donated by **Edgar & Wood Solicitors and Bell State School P & C Association.***

Section H – FARM PRODUCE

Chief Steward: Wayne McGuire (0419 704 480)

- ENTRY FEE:** Open Section: 50 cents. Juniors: free
PRIZE MONEY: 1st - \$2, 2nd – \$1
EXHIBITS: Delivered to the TAB room (near Main Bar) before 10.45am Friday 28th February 2025.
JUDGING TIME: 11.00am

SECTION RULES:

1. Exhibits need to be delivered to the Produce Pavilion between the hours of 7.00am to 10.45am on the Friday before the Show. No late entries will be accepted. Judging will commence promptly at 11.00am.
2. Names of all varieties of grain must be stated on entry form as well as card inserted in samples. Samples to be in no less than 1 litre ice cream containers. NO PLASTIC BAGS.
3. The exhibits in this section to be judged on their quality, weight, size, plumpness, evenness and colour.
4. All exhibits in this section must be produced or manufactured by the exhibitor and must be in marketable condition. High moisture grain not eligible for prizes.
5. Three or more entries or no second prize.
6. Exhibits are to be collected between 2.00pm and 4.00pm on Sunday 2nd March 2025. Any uncollected exhibits will be disposed of.

GRAINS

- H1 Wheat - prime hard.
H2 Wheat - A.H.
H3 Wheat - A.S.W.
H4 Wheat - Feed

Champion Wheat Exhibit (H1-H4) - \$20 donated by Nutrien Ag Solutions

- H5 Barley, malt.
H6 Barley, any other variety, feed.

Champion Barley Exhibit (H5-H6) - \$20 donated by Western Downs Regional Council

SHEAVES

All Sheaves to be 10 cm diameter, except sorghum (10-12 Stalks)

- H7 Sheaf Sorghum, any variety, must be at least 75% coloured.
H8 Sheaf Sorghum, any variety, must be green.
H9 Sheaf Wheat, any variety.
H10 Sheaf Barley, any variety.
H11 Sheaf Jap Millet.
H12 Sheaf White Panicum.
H13 Sheaf French White Millet.
H14 Sheaf Setaria (dwarf or giant).
H15 Sheaf Panorama Millet.

H16 Sheaf Sunflower Heads, any variety, 4 heads.
Champion Sheaf Exhibit (H7 – H16) - \$20 donated by Bell Show Society.

H17 Sheaf Rhodes Grass.

H18 Sheaf Green Panic.

H19 Sheaf Buffel.

H20 Sheaf Lucerne.

H21 Sheaf Sweet Sorghum, any variety

H22 Any other Grass

Champion Sheaf Exhibit (H17 – H22) - \$20 donated by Bell Show Society.

H23 Bale of Forage Sorghum.

H25 Bale of Lucerne Hay.

H25 Bale of Straw Hay.

H26 Bale of Oaten Hay.

H27 Grain Sorghum, any seed variety.

H28 Oats, any seed variety.

H29 Canary Seed.

H30 Sunflower Seed, any variety.

H31 French Millet Seed.

H32 Jap Millet Seed.

H33 Panorama Millet Seed.

H34 Any Legume Seed, pea or bean.

H35 Any Seed Not Mentioned.

Most Points (H23 - H35) - \$20 donated by Williams Family

Prize money (H1 - H35) donated by Bell Show Society

FRUIT AND VEGETABLES

H36 Potatoes, any variety. (4)

H37 Sweet Potatoes. (4)

H38 Onions, any variety. (4)

H39 Spring Onions. (4)

H40 Beets. (4)

H41 Carrots. (4)

H42 Radishes. (6)

H43 Lettuce, any variety. (1)

H44 Runner Beans. (not less than 10 pods)

H45 Dwarf Beans. (not less than 10 pods)

H46 Eggplant. (2)

H47 Red Capsicum. (2)

H48 Green Capsicum. (2)

H49 Chillies, any variety. (6)

H50 Squash, White. (2)

H51 Button Squash. (4)

H52 Large Zucchini. (2)

H53 Small Zucchini. (4)

H54 Tomatoes, large. (6)

- H55 Egg Tomatoes or any Small variety of Tomatoes (6)
- H56 Cherry Tomatoes (6)
- H57 Long Cucumbers. (2)
- H58 Apple Cucumbers. (2)
- H59 Rhubarb. (6)
- H60 Silverbeet. (6)
- H61 Bok Choy. (4)
- H62 Bunch Parsley.
- H63 Queensland Blue Pumpkin. (1)
- H64 Jap Pumpkin. (1)
- H65 Butternut Pumpkin. (1)
- H66 Potkin Pumpkin. (1)
- H67 Heaviest Cattle Pumpkin. (1)
- H68 Any Other Pumpkin not mentioned. (1)
- H69 Any Other Vegetable. (1)
- H70 Watermelon, Long. (1)
- H71 Watermelon, Round. (1)
- H72 Rock Melon. (1)
- H73 Preserving or Pie Melon. (1)
- H74 Citrus, any variety. (3)
- H75 Passionfruit, any variety. (3)
- H76 Any Other Fruit. (1)
- H77 Best Collection Fruit or Vegetables, homegrown. (not less than 4 varieties)
- H78 Best Collection of Herbs, homegrown. (not less than 4 varieties)

*Prize money (H36 – H78) - donated by **Williams Family***

*Champion Vegetable or Fruit (H36 – H78) - \$20 donated by **Laffy Tiling***

EGGS

- H79 Hen Eggs, White (6).
- H80 Hen Eggs, Brown (6).
- H81 Eggs, any other variety (6).

*Champion Eggs (H79-H81) - \$20 donated by **Fullagar Family**.*

CHILDREN UNDER 15 YEARS – ENTRY FREE

- H82 Mini Vegetable Garden grown in a box
*1st \$5, 2nd \$3, donated by **Laffy Tiling***
- H83 Mini Herb Garden grown in a box
*1st \$5, 2nd \$3, donated by **Laffy Tiling***

APICULTURE

- H84 One Bottle Honey, Dark.
- H85 One Bottle Honey, Light.

*Champion Honey (H84-H85) - \$5 donated by **Williams Family***

*Most Points in Farm Produce, Prize donated by **Williams Family***

*Champion Farm Produce Exhibit – **Clarry Patch Memorial Trophy** donated by the **Patch Family***

YOUNG JUDGES COMPETITION



Competitors will judge a selection of exhibited produce with points awarded for judging exhibits in line with the official judging.

The Judge's decision is final.

To be held at the Farm Produce Building on Friday 28th February 2025 at 12.30pm.

Competitors under 18 years must have the approval of a parent or guardian to attend.

School groups to advise the Steward of the intended attendance.

No Entry Fee.

Prize money: 1st - \$10, 2nd - \$6, 3rd - \$4 donated by **Wayne McGuire**



1973 Display by the Bell History Group

Saturday 3rd, Sunday 4th, March

Members are excited to invite our community to check on the progress of the group's activity to collect the available history of our town and district so far.

The group operates as a sub-committee of the Bell Bunya Community Centre Inc and, courtesy of Bell Show Society, has on display, memorabilia kindly shared from a rich collection of scrapbooks of Mrs Dorothy McPhee, Mrs Violet Scheuerle and others.

Historic maps, photos and various items collected from many sources, all add to this feature one-day display in the JD Mulcahy Pavilion on Saturday of the 2025 Bell Show.

Browse, chat to members too, from 9-5pm as you absorb the rich tapestry of exhibits in the pavilion.



Check out our website for all our other 2025 show events

www.bellshowandrodeo.com.au

Bull Ride	Stock Horse Challenge	Maiden Campdraft
Stud Cattle	Prime Cattle	Prime Lambs
Petting Zoo	Woodchop	Face Painting
Lolly Drop	Dog Jumping	Bell History Display
Dodgems	Rock Wall	Cup & Saucer ride
Inflatable Obstacle Course	Young Farmers Challenge	Vintage Farm Machinery Display
Ute, Car and Bike Muster	Kids Sandpit	Free Bunnings workshops
Bar until late	DJ music until late	Fireworks

How to become a member
Get entry tickets
Trade Sites and Market Stall Application forms
About Us
Our History

