

THE J.D. MULCAHY PAVILION

WHO IS J.D. MULCAHY?

John Mulcahy moved out of dairying in the early fifties just like other land holders in the Yamsion district. Without a dairy and cheese factory and the workers it employed, Yamsion was no longer a focus for the community and the interest and involvement in the local sports days and campdrafts died out. In contrast the little township of Bell was rattling along. At a meeting to discuss the future of Yamsion, it was decided to move the sports days and campdrafts to Bell.

As he had helped build the Yamsion hall and grounds in the forties, John now turned his hand to helping with the Bell Showgrounds. The plans included a show ring and pavilions, a racetrack, and a rodeo and campdraft area.

So once again John set up his mountains with his axe over his shoulder and Jim Myers in tow to cur the timber for the yards and buildings. While they were felling trees for the showgrounds, Jim Myers says he saw John miss death by an inch.

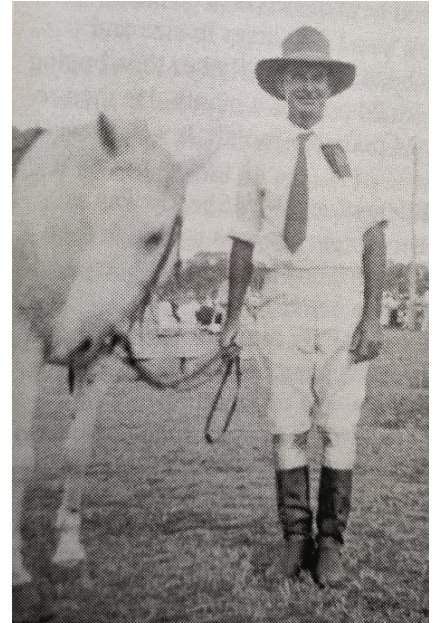
"We were felling this tree – a big ironbark up a hill," says Jim. "He was standing at the stump

and I was down hill. He was yelling at me to go because the tree was about to come down. So I went and as I looked back I saw the tree slip back on the stump. John was holding his saw up in the air as if to ward off the tree. As it came down it hit his saw and broke it clean in half."

They took the timber into the Dalby sawmill where it was sawn into posts and rails to be used in the show ring and pavilion. It was a big job and forty years down the track the buildings and yards are still serving the purpose for which they were built in the fifties.

In recognition of his work on the grounds and his contribution to the community in general, when the Bell showground pavilion was officially opened in 1958 it was named in John's honour – the J.D. Mulcahy Pavilion.

(Taken from the John Mulcahy Story: Four Score and More, page 55)



John Douglas Mulcahy was the long-time ringmaster at the Bell Show.